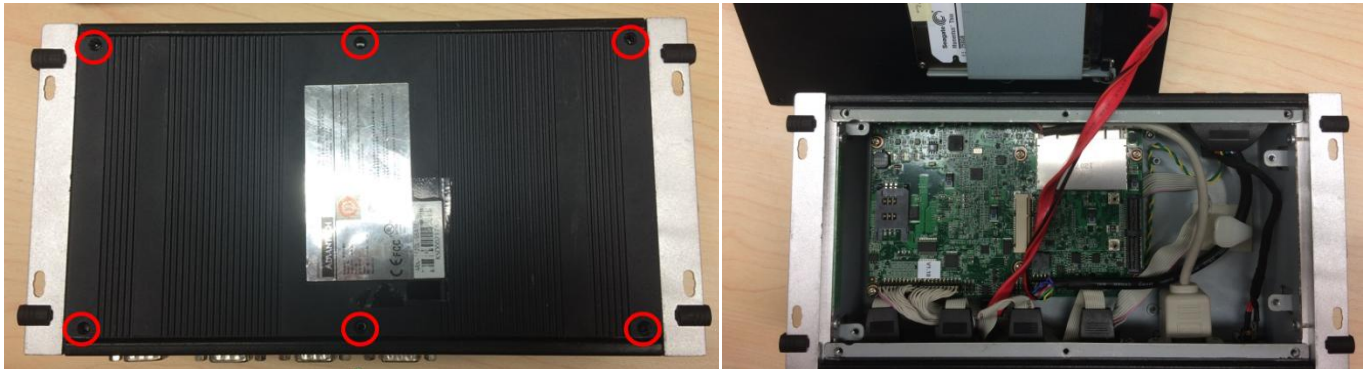


ARK-2120L COM2 RS-422/485 setting SOP

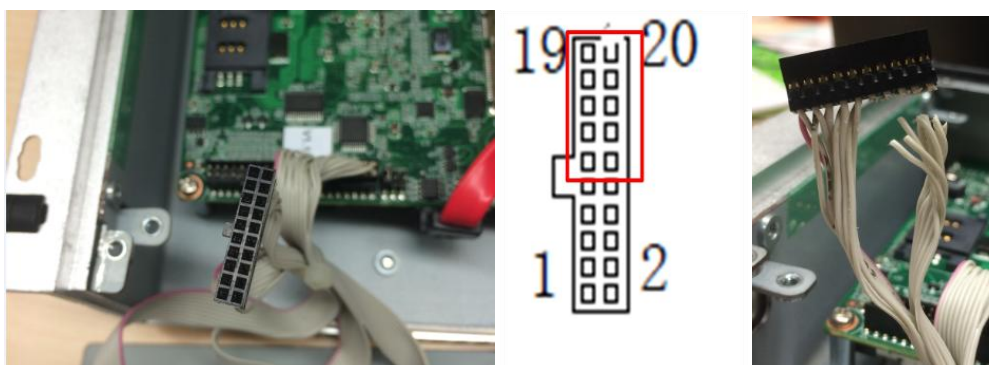
Step 1 : Remove 6 screws of bottom cover, and open the bottom cover.



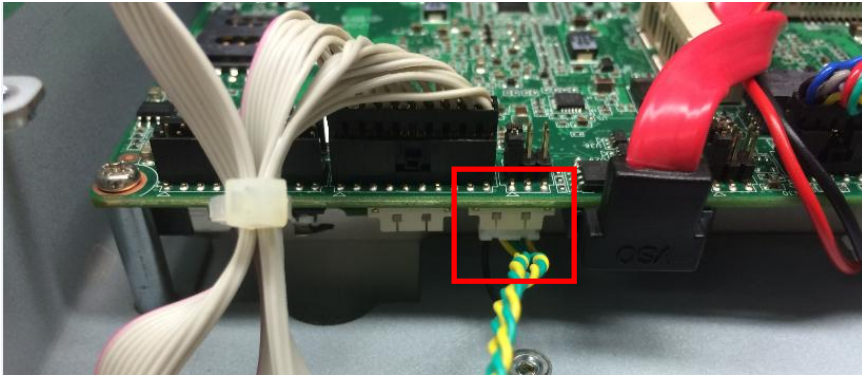
Step 2 : Remove 3 screws on front panel and take off front panel.
(Keep the cable on the front panel.)



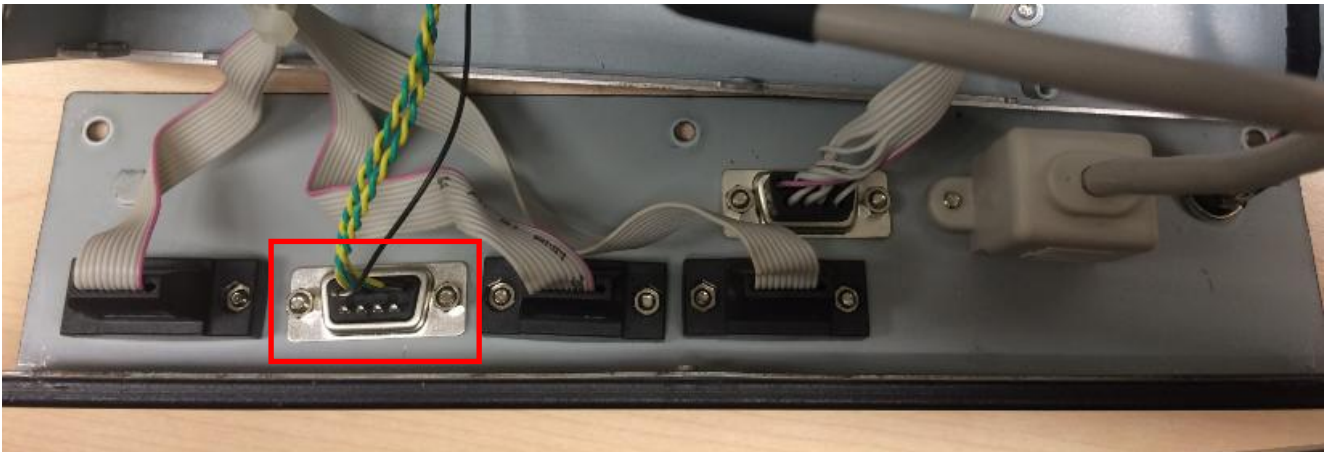
Step 3 : Disconnect the cable from M/B CN19, cut off cable 11~20pin as below picture. And remove the COM2 connector on front panel.



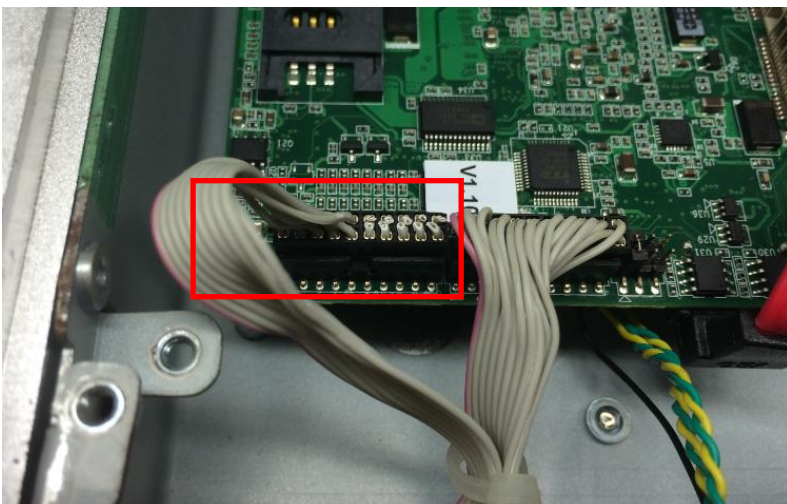
Step 4 : Take 170002043 (COM2 cable) from accessory box, connect to M/B CN20.



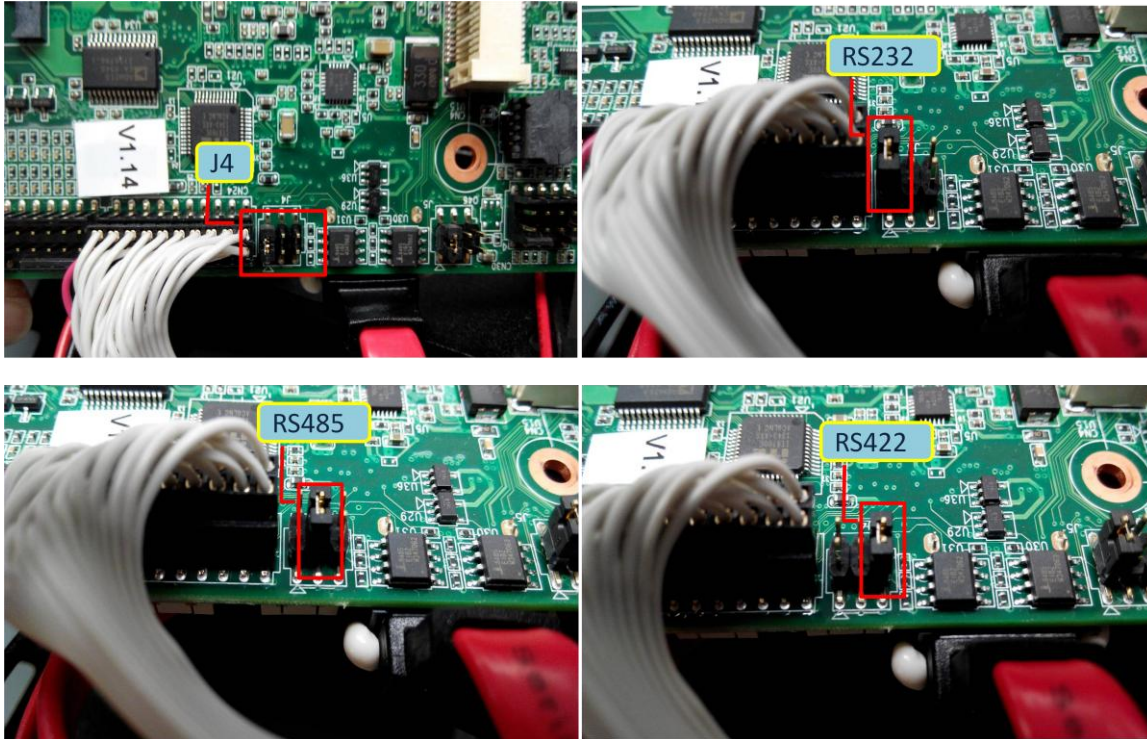
Step 5 : Screw COM2 cable connector (DB9) on front panel.



Step 6 : Connect original COM1 cable to CN19.



Step 7 : Setting J4 jumper for RS-232/422/485.



Step 8 : Screw up 3 screws on front panel.



Step 9 : Put the bottom cover back and screw 6 screws, done.

